

BHA Management

Installation guide

Table of Contents

I. Introduction.....	3
1.Forewords.....	3
A. System Requirements.....	3
II. Installation.....	4
1.Automatic, Step by step using the msi file.....	4
III. Working with databases.....	11
1.First launch.....	11
2.Database types.....	11
3.Configuration.....	11
IV. Contacts.....	14
1.General inquiries.....	14
2.Sales / License contact.....	14
3.Development Information / Bug report.....	14

I. Introduction

1. Forewords

This guide only covers basic installation and setup of **BHA Management** and is intended for system administrators. Users should refer to the help manual for day to day usage.

For installation and setup of the **DrillScan License server**, please refer to the License server handbook.

A. System Requirements

Hardware	<ul style="list-style-type: none">. Pentium class processor,. 256MB RAM. 25 MB Hard drive space. A network adapter or an available USB or LPT port
Software	<ul style="list-style-type: none">. Windows 2000/XP/2003/Vista 32bits. Administrative rights for installation

II. Installation

1. Automatic, Step by step using the *msi* file

Note : BHA Management does NOT run on Windows 95, 98, Me or NT4. This is the most common (and quick) way of installing BHA Management. Find the STABLE-BHAManagement-buildxxxx.msi file using Windows Explorer, and double click-it to launch setup. xxxx is replaced by the build number. Lower number means older release.

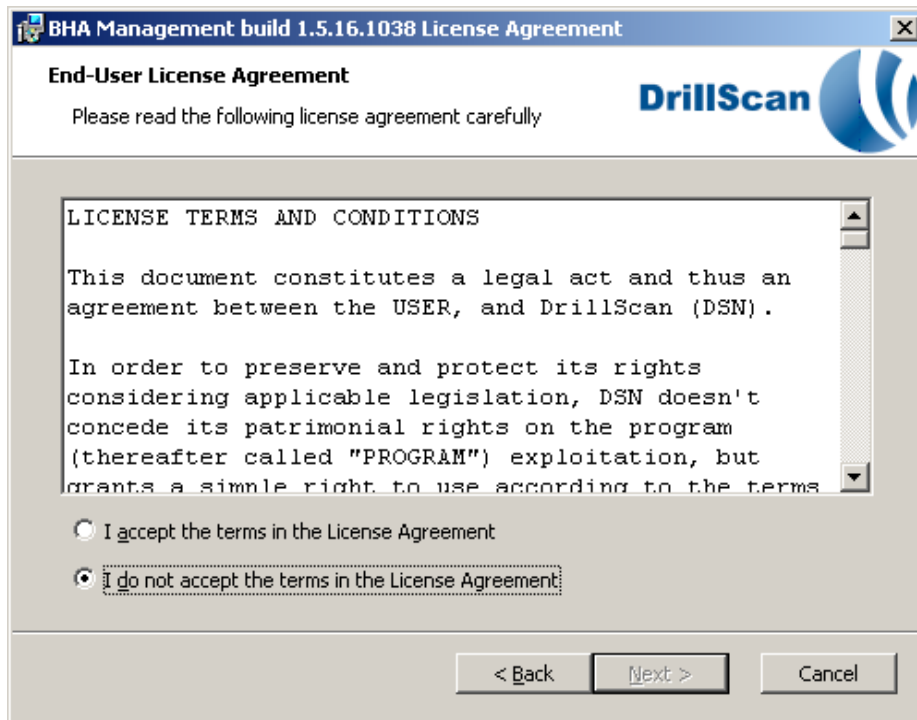
Please note that the installation package is generated using the WiX toolbox by Microsoft and can be entirely configured for automatic installation.



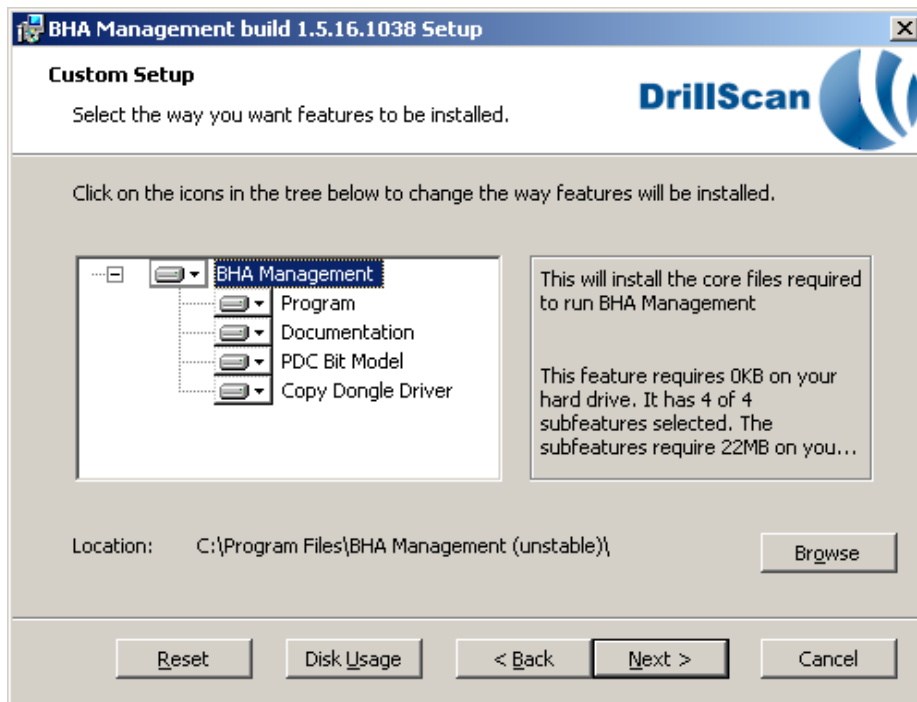
You'll be presented with a familiar MSI installation window, click **Next** on the first screen to initiate the installation procedure.



The following screen presents you our license agreement. Read it carefully and, if you agree, select **I accept the terms in the license Agreement** and click on **Next**



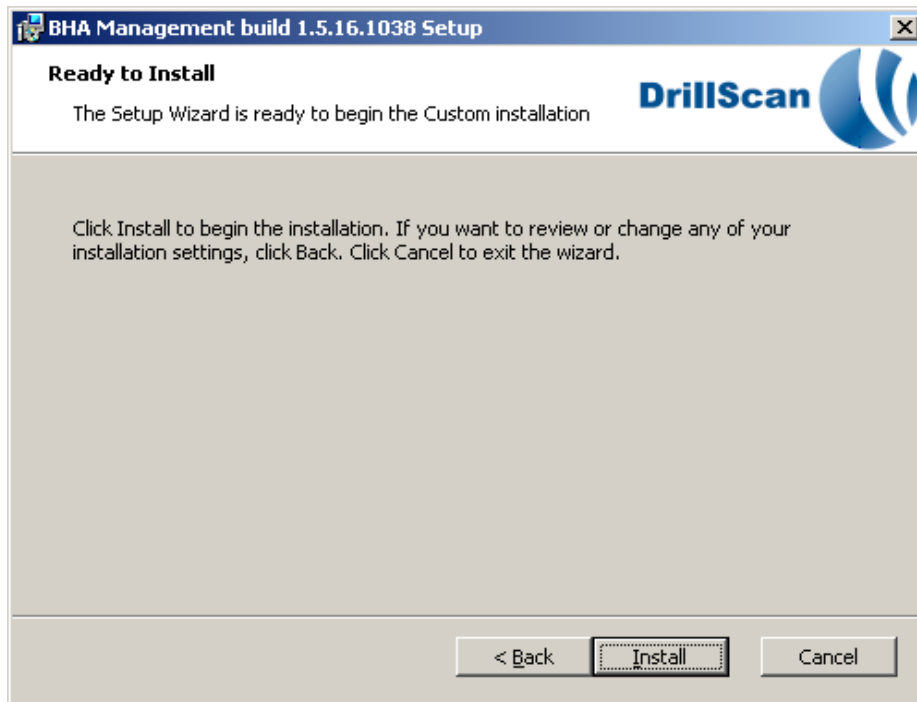
This screen allows you to select the type of setup you'd like. If you want to modify the installation process (not recommended), choose a **Custom Installation**, otherwise, click on **Typical** or **Complete** and then click **Next** to proceed to the next step.



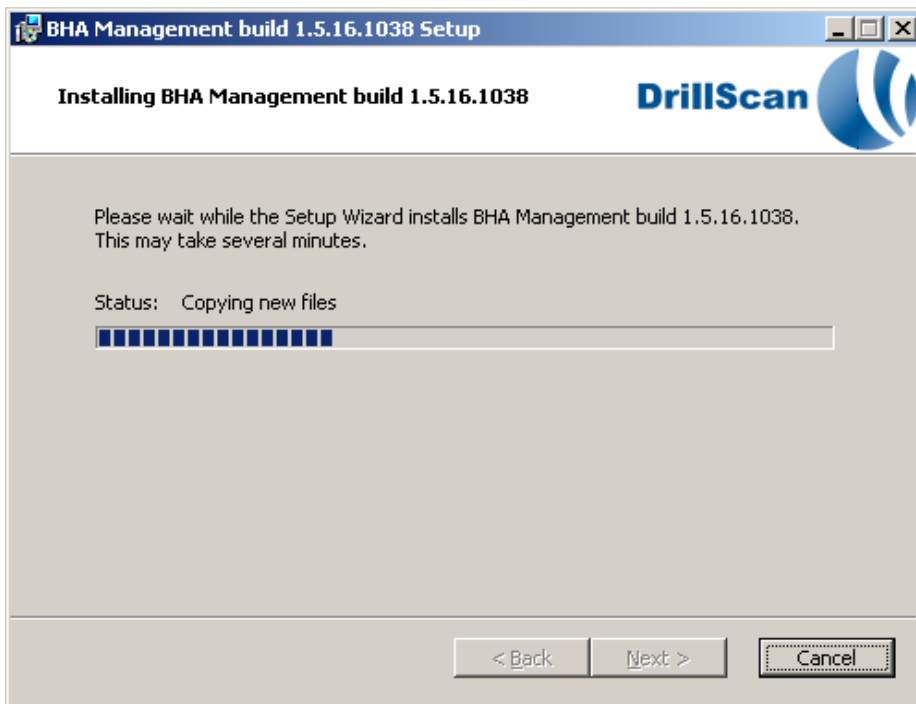
Note : This step is available only if you have selected a Custom Setup Installation method.

Select the component you'd like to install and the installation path (by default : C:\%PROGRAM FILES DIR%\BHA Management). Click on the Next Button to proceed to the next step.

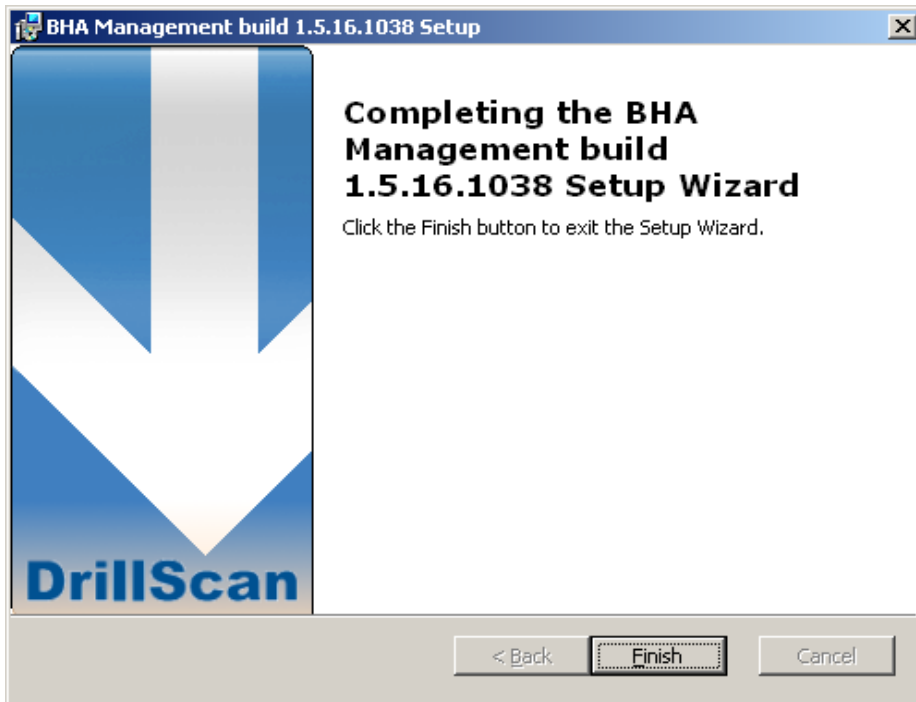
Once your installation is ready, the following screen will appear, click on the Install button to proceed.



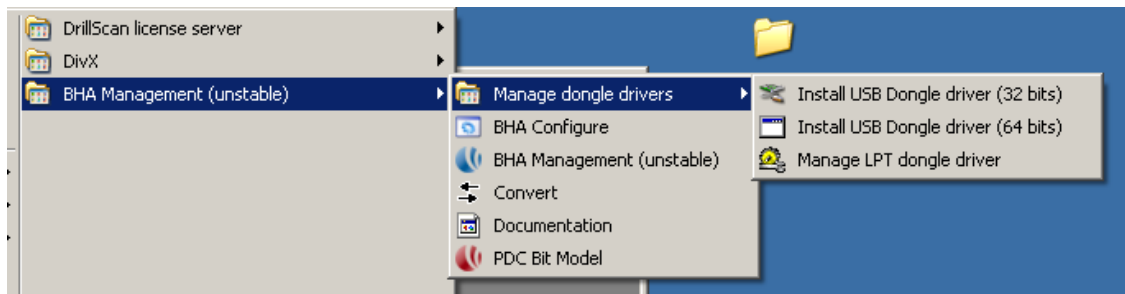
Please wait while the setup process makes the required change to your system.



The Setup is now completed, click on Finish to close the installation program.



The setup is now completed, in the start menu the following items should be present :



- **Documentation** icon is a link to the user manual ; note that a PDF reader is required to read the documentation

- **BHA Configure** allows you to configure the license infos (USB, LPT or network dongle), license number, default colors and per-database default operator/affiliate and system of units

- **BHA Management** launch the main BHA Management software

- **Convert** is a third party tool to perform quick unit conversions

- **PDC Bit Model** if enabled by license launch the PDC design tool

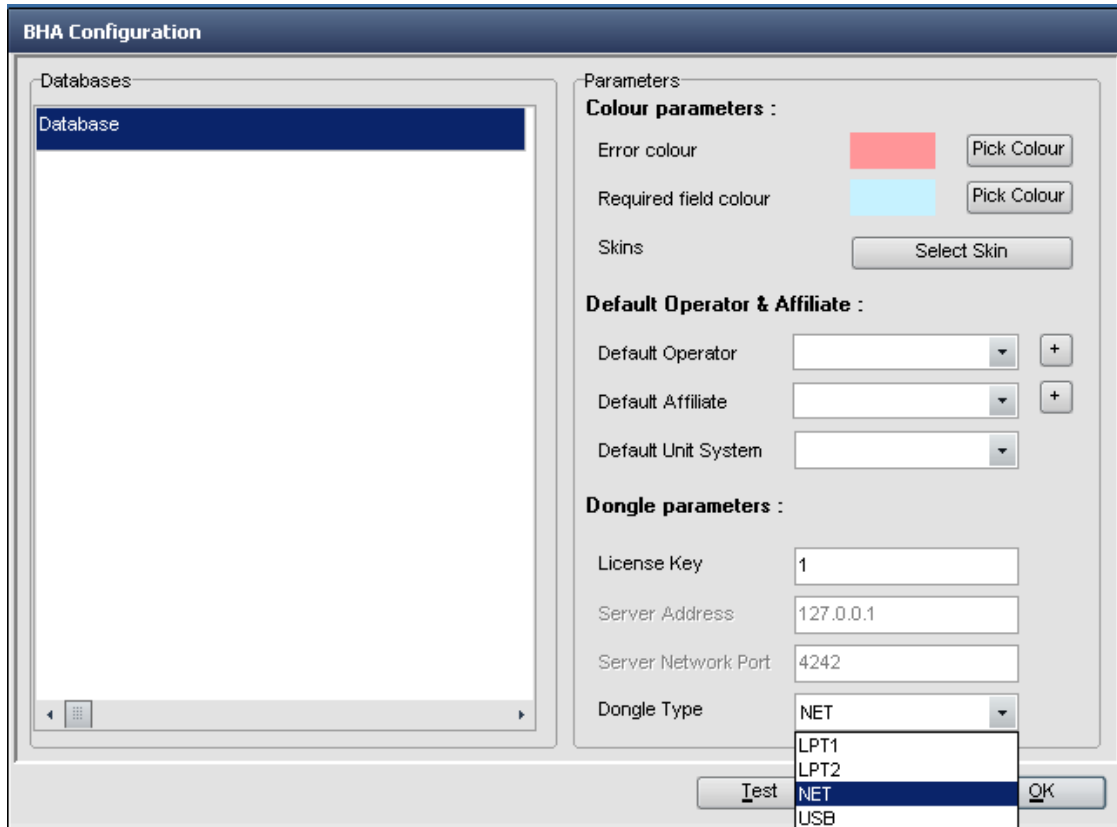
Manage Dongle Drivers entries are provided for troubleshooting only, (*Note : This action should not be necessary as all dongles are supposed HID compliant ie does not require any drivers to be installed*).

- **Install USB Dongle Driver (32bits)** install the USB driver for a 32bits Windows server.

- **Install USB Dongle Driver (64bits)** install the USB driver for a 64bits Windows server.

- **Manage LPT dongle driver** manage the LPT dongle driver

Launch now **BHA Configure** , and follow the step by step procedure to fill in the license information. Please note that parameters are stored for each users. If multiple users will run BHA Management on the same workstation, you need to enter the license informations for each user.



On first launch the **Databases** panel will be empty as no databases are registered with BHA Management. You can configure default values for Operator, Affiliate and Unit system only when at least one database is linked to BHA Management.

To configure license informations, first enter the **License key** . This key is provided by DrillScan for each dongle you purchase. License key is linked to a physical dongle (if you use your dongle on another workstation, you must change the license key) ; however all workstations using a license server will use the same license key.

Next choose the **Dongle Type** :

- USB for USB dongles (compatible with USB revision 1, 1.1 and 2)
- LPT1 or LPT2 for parallel port dongles (printers can be plugged on the back and dongle will be invisible for the printer)
- NET for License server users. If you choose this type of license, you need to also fill in the server address and port (provided by your system administrator)

Clicking the **Test** button will try to authenticate the dongle, or request a token from the license server and warn you of any problem : dongle not found, invalid license key, expired license, server not reachable, ...

Press **Ok** to save settings. Settings are saved for each user in the %USER DIRECTORY%\Application Data\DrillScan\BHA Management.ini file. This file is text only, pretty self explanatory, and can be generated by the system administrator if needed (see contact section if you need more information or sample code).

III. Working with databases

1. First launch

On first launch, BHA Management will create a default database (Firebird embedded) in the directory %USER DIRECTORY%\Application Data\DrillScan\

2. Database types

BHA Management support 4 databases types :

- **Firebird (embedded)** : This is the default and recommended database type when working with BHA Management. Technically each database is contained in a single user created file (.FDB extension). They're fast, extensible, do not require a database server. However if stored on a network drive BHA Management won't be able to open them directly. The database will be copied to a local working directory beforehand, and copied back at the end of session.
- **Firebird** : This database require a Firebird 2 server (classic or superserver). Firebird Embedded databases and regular Firebird databases can easily be converted back and forth (a user can borrow a Firebird database during a trip, and copy it back on the server afterwards)
- **PostgreSQL** : This database require a PostgreSQL 8+ server
- **Oracle** : This database require an Oracle 9+ or XE server. The Oracle client is not provided with BHA Management. When using an Oracle database, the **DB Name** field is the TNS alias of the database (which must be available system wide).

Warning : Despite supporting database servers, BHA Management is a single user application.

Note : Firebird and PostgreSQL client DLL are provided with each BHA Management installation. For Oracle servers, you'll need to install the Oracle client on each workstation. You'll also need to setup the correct TNS (used as **DB Name**)

3. Configuration

You can add, create or delete databases from the database selection screen of BHA Management :

- **Adding** : Adding a database (**Locate existing database** in the Databases menu) allows you to reference an existing BHA Management database.

The screenshot shows a configuration dialog box with the following fields:

- Name:
- DB Type: Firebird (embedded) (dropdown menu)
- DB URL:
- DB Name:
- Username: sysdba
- Password: *****
- Directory: ...

Buttons: Cancel, Ok

- First select the **DB Type** from the dropdown menu
- If the database type is Firebird embedded
 - Type in the path to the database, or click the ... button to browse for this database.
 - Else enter the URL (server address, URI or IPv4 format), database name (or TNS for Oracle databases), username and password (provided by your system administrator)
- Select a name for this database to appear as in the database selection screen of BHA Management

The screenshot shows a configuration dialog box with the following fields:

- Name:
- DB Type: PostgreSQL (dropdown menu)
- DB URL:
- DB Name:
- Username: sysdba
- Password: *****
- Directory: ...

Buttons: Cancel, Ok

- **Create :** To create a database, you will need to fill in the same information as adding. For Firebird embedded databases, you'll need to select the directory you wish to store the database to. For non embedded Firebird databases, the **DB**

Name of the database must be an empty database (please contact your database administrator for setup). BHA Management will then create then populate the databases with needed tables and system values. To function properly, BHA Management needs SELECT, INSERT, UPDATE, DELETE and CREATE TABLE rights.

- **Deleting** : Deleting a database will unregister it with BHA Management. Please note that it'll **NOT** physically delete the database nor its data (You'll be asked for Firebird embedded databases only, but it's not the default option).

Backing up and restoring of databases is currently only supported for Firebird embedded databases. Please contact your database administrator for others database type backups.

IV. Contacts

1. General inquiries

support@drillscan.com

2. Sales / License contact

ludovic.macresy@drillscan.com

3. Development Information / Bug report

boris.seve@drillscan.com

jeremy.berge@drillscan.com